

# OcuHeal™

(previously, OcuSurf)  
Enhanced Bioavailability of Your API  
Rapid Onset of Activity  
Enhanced Duration of Activity

## LICENSABLE TECHNOLOGY: CALL FOR A COLLABORATION

### What it is:

- A novel delivery system for ocular, intranasal and dermal products
- **Technology is platform and can be applied to dermal and other topical routes.**

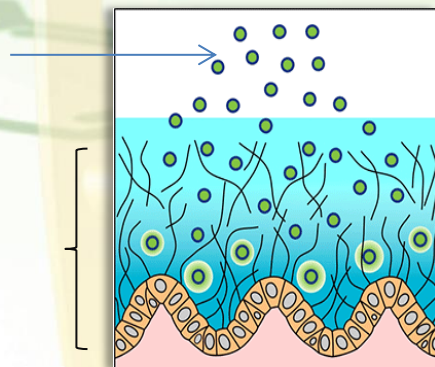
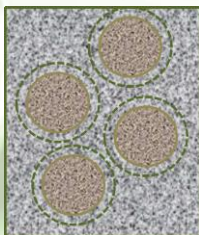
### Advantages of OcuHeal:

- >95% of ophthalmic and dermal products utilized insoluble active pharmaceutical ingredients; thus, as they exist as drug suspensions. For drug suspensions to absorb, they would need to dissolve first. In the ocular space, rapid fluid turnover and loss *via* the nasolacrimal duct results in just 5% of the drug being absorbed. Thus, clinical need exists for a pharmaceutically-compliant drug delivery system that can rapidly permeate and adhere to tissues for enhanced bioavailability and enhanced duration.
- OcuSurf formulations rapidly permeate for **enhanced bioavailability** and are membrane-adherent for **enhanced duration**. Ocusurf permeate to the posterior of the eye, with a single eye-drop.

### Features of OcuHeal:

- **Biphasic Formulation:** Liquid-crystalline drug-containing “nanocores”, allow penetration into membranes to form nanoreservoirs for sustained release.
- **Rapid Permeation of Ocular Mucosa by OcuHeal LNP Nanocores**
- **High Membrane Adherence, Mucoadhesive**

Drug-Containing, Liquid-Crystalline, Lipid “Nanocores”



Ocular mucosa:  
35-55μ